

Artwork Guidelines

Before uploading artwork, please note the following:

Accepted File Forms



Vector Images

Resolution independent images using points, lines & shapes that can be resized without loss of quality.



Raster Images

Resolution dependent images that use a grid of small dots & lose quality when resized.



Adobe PDF
(preferred)



Adobe
Illustrator



Encapsulated
PostScript



SVG File



Adobe
Photoshop



TIFF File



JPEG File



PNG File



CMYK is a subtractive 4-color printing process that used cyan, magenta, yellow & black inks. It is subtractive since light is reflected off the paper.



RGB is an additive light-based color used for computer monitors that includes red, green & blue. It is additive since direct light is used to display color.

If available, save your artwork as a high-resolution Adobe PDF with Press Quality selected to avoid poor print quality. PDF is an open format, and some PDF elements are not printable. We suggest applying PDF/X to ensure all elements of your art file can be printed.

Word processors, spreadsheets, presentations, PDF readers and rudimentary image editing programs are not the ideal choice for editing or creating graphics. Also, we do not recommend using Adobe Reader to edit your PDF files. Use our free professional [online design software](#) or applications like Adobe Creative Suite, CorelDraw or QuarkXPress to export an Adobe PDF with Press Quality.

Finding the Correct Label Size

Before ordering your labels, if you need help finding the correct label size we have several options to help you find the proper fit. Read [How to Choose the Correct Label Size](#) to see how easy it is to find the right label.

If you have any questions regarding setting up your artwork or selecting the right file types, please call our Client Services Department at (800) 942-8379 to help guide you.

File Requirements

- ✓ Minimum 300dpi resolution (at print size)
- ✓ Embedded fonts are 5-points size or greater
- ✓ Lines are 0.5-points thickness or greater
- ✓ Graphics are embedded (not linked)
- ✓ Minimum barcode size of 80% with quiet zone

Your fonts must be embedded. If you're not sure, convert your text to outline before uploading your artwork to avoid delays. If converted to an image, pixel-based typesetting of 800dpi is suggested.

JPEG, PNG, BMP and other non-copyright images taken from the internet may include settings or artifacts that interfere with print quality. A higher resolution may help. For these and grayscale images, a minimum 600dpi is suggested.

Color Palette

We accept **RGB and CMYK** color palettes. We print in 4-color GRACol. Other gamuts or color profiles are converted before printing. PANTONE (PMS) colors are printed in their closest CMYK color.

If brand colors are required, please contact us at (800) 942-8379. We may recommend purchasing a printed proof to ensure we meet your color expectations.

White underprinting is available for roll labels and requires providing artwork in vector format (PDF, AI, EPS). We suggest letting us apply white underprint. To assign white ink yourself, identify it as a separate spot color named HPI-White.

Artwork Colors

We accept both CMYK and RGB color palettes, however, we **highly recommend** art files be submitted in CMYK for best printing results. Files submitted in RGB will have to be converted in-house to CMYK, and the color difference can be quite dramatic, especially for bright colors.

CMYK 



Print

RGB 

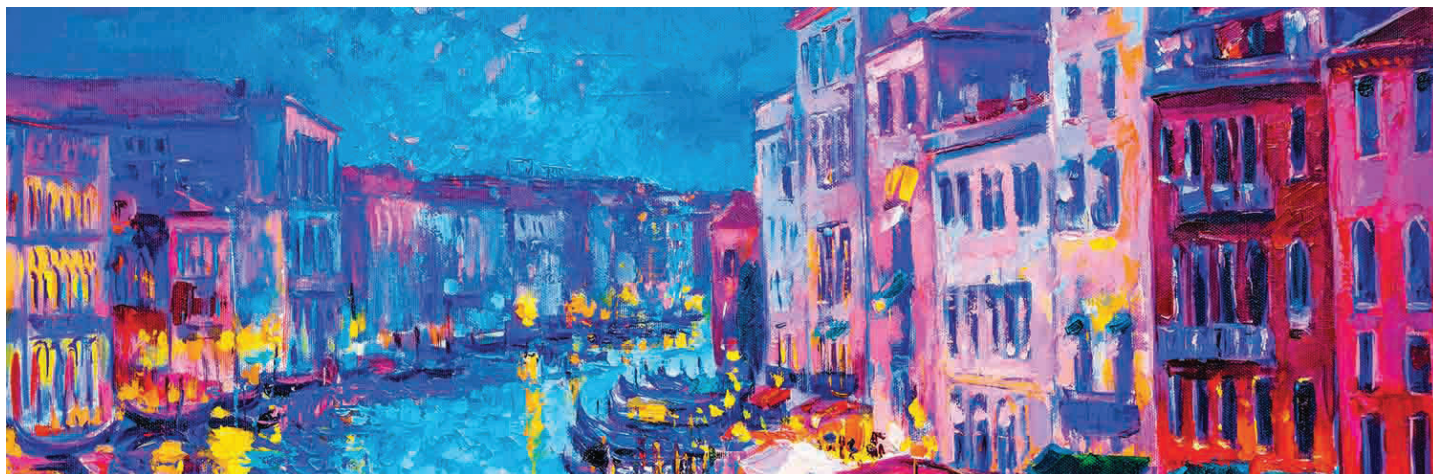


Digital/Web

CMYK stands for cyan, magenta, yellow and black (also called "key"). RGB stands for red, green and blue. While both methods offer a wide range of colors, there are fundamental differences in how they are created. CMYK is the industry standard for professionally printed materials, as RGB colors can appear dull or faded when printed. RGB is best for computer monitors, devices, cameras and light-based technology.

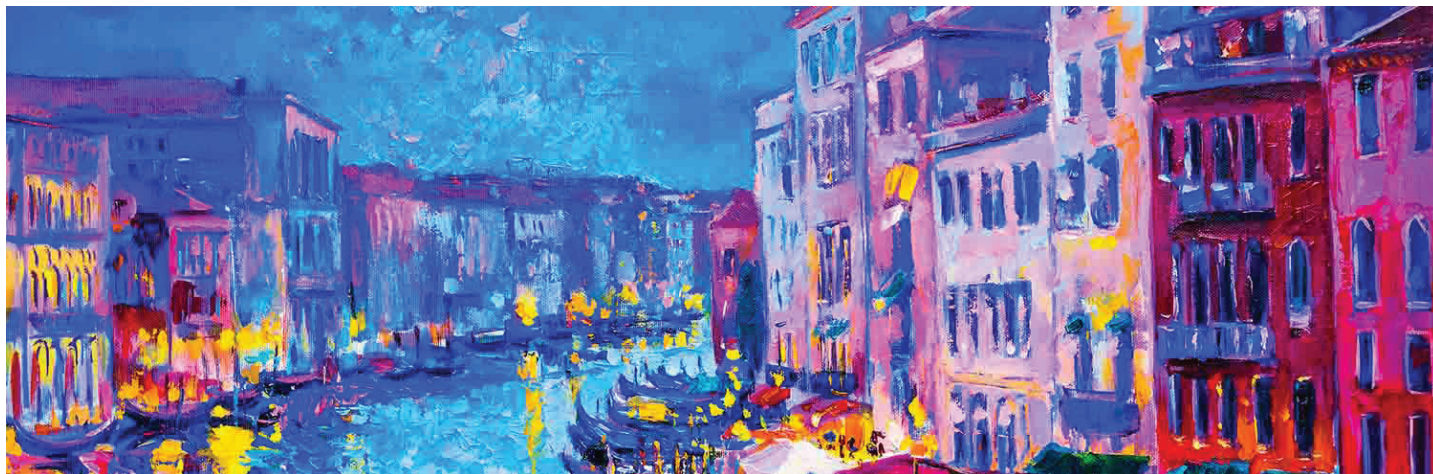
Since most of today's image-editing programs use RGB as the standard default, make sure your color settings are set to CMYK before you begin designing for the best printing results. If using a graphic designer, let them know you'll need your artwork delivered in CMYK.

CMYK Image (Print Use)

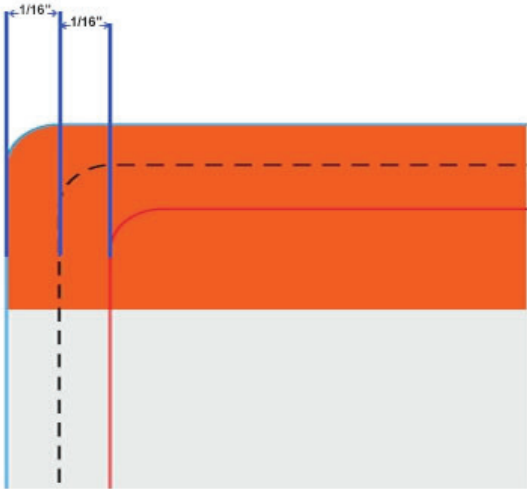


CMYK colors are the industry standard for printed materials and produce truer, more accurate color matching.

RGB Image (Digital/Web Use)



RGB colors are used when designing for light-based technology such as computer monitors, mobile devices and televisions.



- Bleed Line:** Any background color or graphic that you want printed to the edge of your label should extend to the Bleed Line to ensure that the final product has no gaps.
- Trim Line:** This is where your label will be cut.
- Safety Line:** All important text and graphics should be inside the Safety Line to ensure that they are not cut off during the printing process.

Trim Line

The trim line is where your label or card will be cut. This is the finished size. To position your art file to the finished size, the trim line may be identified as a spot color named **DIELINE** in your art file. The trim

line must match the size you selected. A better option is to use our online design software to position your art correctly.

Many factors (art file, label size & material properties) affect the final trim size. So make sure to use bleed margins to print to the edge, and safety margins to fit your art.

Bleed Line

Include 1/16" space outside the dimensions (on each side of the trim line) as the bleed area. Any background color or graphic that you want printed to the edge of your label should extend to the bleed

line to ensure the final product has no gaps. The bleed line can be defined as a spot color named **BLEEDLINE** in your art file.

Safety Line

Include 1/16" space inside the dimensions (on each side of the trim line) as a safe area. Text & graphics should be inside the safety line to ensure they're not cut off. The safety line can be defined as a spot color named **SAFELINE**.

Electronic & Printed Proofs

Free Electronic Proofs

A free electronic proof is the best option for reviewing your custom printed orders. For sheet labels and cards, you will be asked to download your electronic proof. For roll labels, we will email you a PDF within 24 hours. Production of your roll labels order will not begin until you have approved all proofs for your entire order.

White underprint is identified in your electronic proof (where applicable). For anything beyond simple white underprinting, please call us at (800) 942-8379.



- The image on the left represents how the label will be printed
- * On clear materials the background will represent the transparent areas.

- The image on the right represents in red the area where the white ink will be printed.

Colors on computer screens vary from device to device. As a result, electronic proofs provide a good approximation of color but are not an exact color match to printed products. Do not expect printing to produce the same bright colors as seen on your screen.

Material Samples & Printed Proofs

If you need to test adhesives or label materials, please order our free roll label sample pack. To request printed material samples, call us at (800) 942-8379.