

How to Instructions for OKI C711 GHS Custom Media Table Download Utility

This windows base utility is designed to download the GHS custom media table to the network printer. Please follow the instructions carefully and complete the procedure as described.

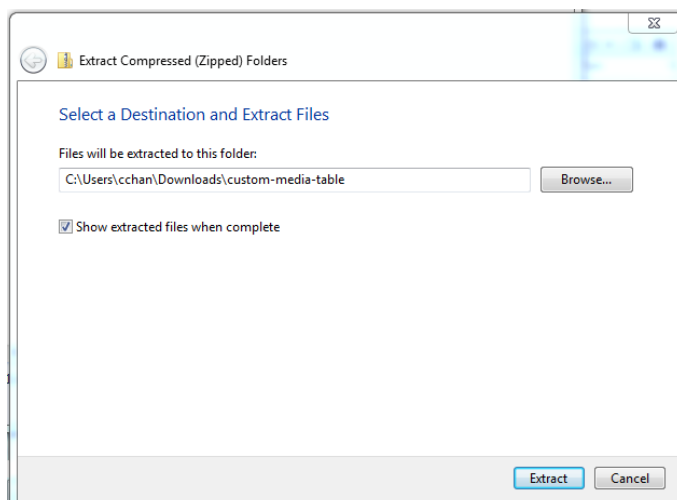
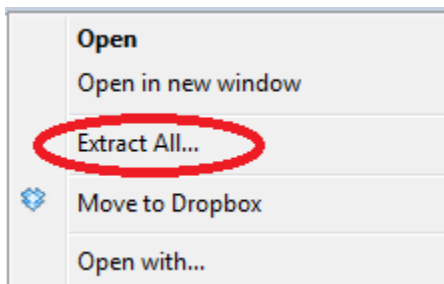
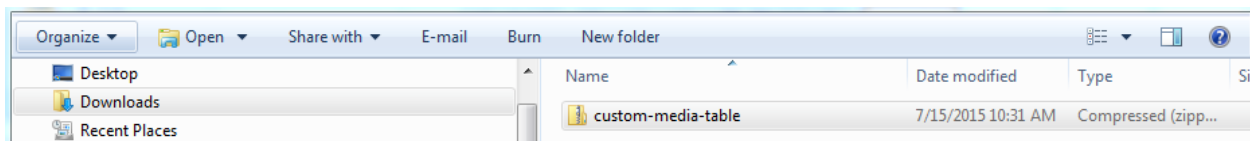
Please note: Installation of this custom media table is only required if you are printing Avery UltraDuty GHS Chemical Labels that are BS 5609 Section 3 Certified.

Please note that your OKI C711 printer must be on your company network in order for this GHS custom media table to be installed. The utility will require **valid IP address of the printer** on the network. Please see instructions how to know the IP address of your printer in **STEP 4** of this document. **How to find the IP Address of the printer?**

Please note: The utility is designed to work using the network connection with a valid IP address. Local USB connection is NOT supported.

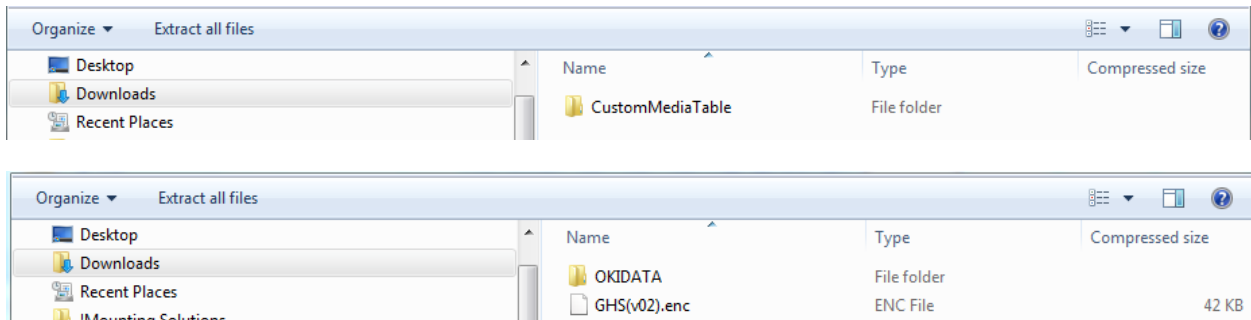
STEP 1

Once you have downloaded the Zip file called “custom-media-table.zip” to your Downloads folder, please right click and use Extract All to save it to a location on your computer.



STEP 2

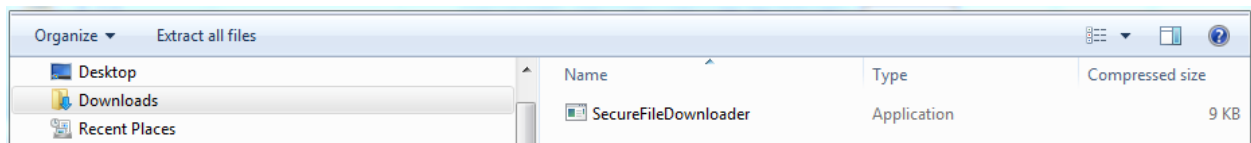
Once you have extracted the files to a folder on your computer, please double click on the folder called “**CustomMediaTable**”. Then double click on the folder called “**OKIDATA**”.



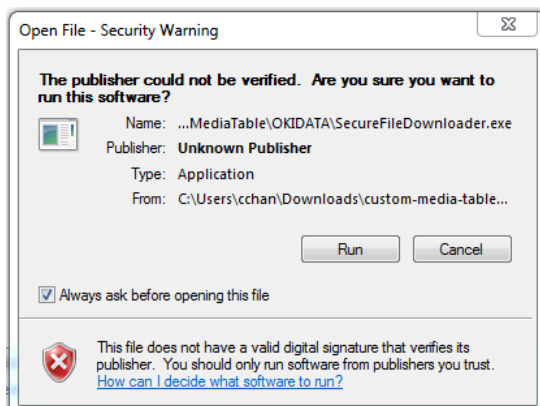
STEP 3

In the OKIDATA folder, you will see a file called “**SecureFileDownloader.exe**”.

Double click this file **SecureFileDownloader.exe** to launch the utility.

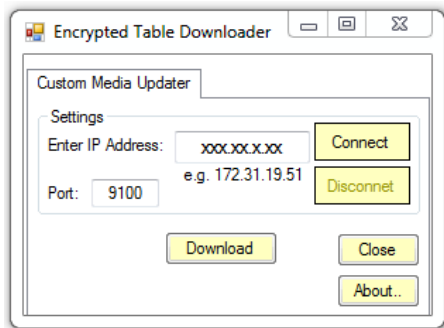


Note: You may see a Security Warning box appear, please click **RUN**.



STEP 4

When you click **RUN**, another box will appear called “**Encrypted Table Downloader**”.



Enter the **IP address** for your OKI C711 printer on your network in “**Enter IP Address**” box.

How to find the IP Address of the printer?

You can find the printer’s IP address setting using the printer’s Network settings or Menu Map (Configuration) of the printer as follows:

From the “Menu” Settings on the front panel:

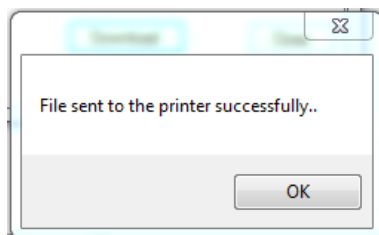
1. Hit “**Up Arrow**” once
2. Select “**Print Information**” (Hit Enter)
3. Select “**Network**” (Hit Enter)
4. **Execute** (Hit Enter)

This will print the network configuration settings for your printer. Please look under the TCP/IP Configuration Section for the line called IPv4 Address.

Once you have entered your printer’s IP address, click the “**Connect**” button. The **Connect** button will now be grayed out confirming the connection.

Now click on the “**Download**” button.

A new box should appear that says “**File sent to the printer successfully**”



The printer will now **re-boot** (Restart) for new media setting to take effect.

Hit **“O.K.”** Button and **“Close”** the Utility. This will complete the table download process.

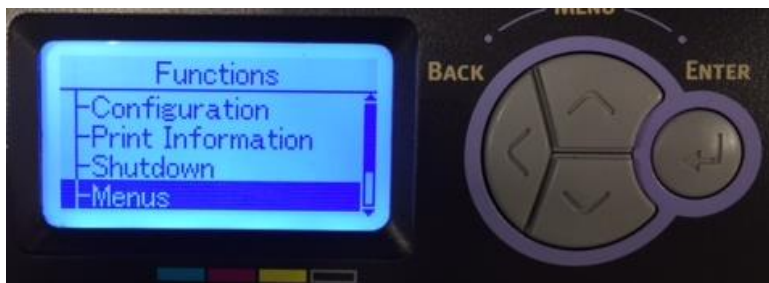
STEP 5

Once your OKI C711 Printer has completed re-booting, go to the printer’s operator panel display and select the new GHS media setting by following the steps below:

Press the **“Enter”** Button



Select Menu



Select **“Tray Configuration”**

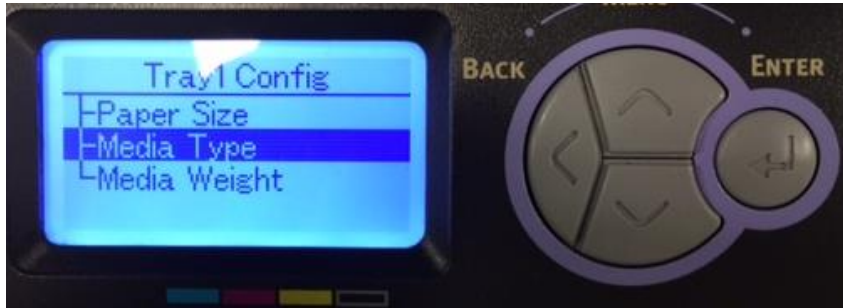


Select the **Tray** you want to use to print your GHS labels from,

For example **“Tray1 Config”** or **“MPTray Config”**.



Select **"Media Type"**



Select **"GHS02"**.



You are now ready to print your BS 5609 Section 3 certified Avery UltraDuty GHS Chemical Labels.