



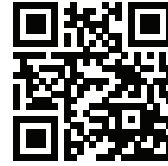
Light Fabric Transfer Instructions



Warning!

Please read all directions below.
Visit avery.com/transfers for more information.

Questions? 800-GO-AVERY (800-462-8379)



Scan to link directly to a How-To video for Avery Light Fabric Transfers.

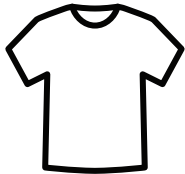
Avery Light Fabric Transfers are designed for white or light colored 100% cotton or poly/cotton blend fabrics. Visit avery.com/transfers for easy-to-use design tools, templates, how-to videos, and other tips on the complete transfer line of products. Follow the steps below to ensure great-looking results. *Note that your results may vary based on a variety of factors, including fabric type, ironing equipment, temperatures, and wash methods.*

Dos & Don'ts of Fabric Transfers:

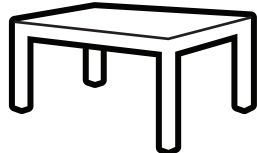
- **Don't** use a laser printer.
- **Don't** use steam in the iron.
- **Don't** use an ironing board, glass, granite, concrete or other heat sensitive or heat-retaining surfaces.
- **Do** iron on a heat resistant surface, such as a wooden table.
- **Do** follow washing instructions before wearing.



Items Needed:



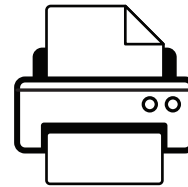
100% cotton or poly/cotton blend, white or light colored fabric.



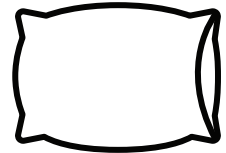
Waist-high smooth heat-resistant surface



Household iron

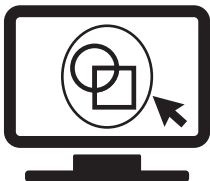


Inkjet printer



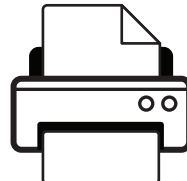
Large cotton pillowcase

1. Design & Print



Design

- Go to avery.com/print and customize your design, using our free templates and online design tools.
- Design image normally as you want it to appear.
Note: Image will be flipped in print preview.



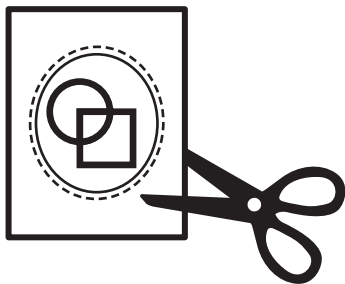
Print

- Test print your design on plain paper to ensure the design looks accurate.
- Feed one fabric sheet at a time.



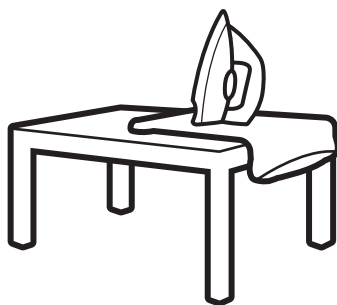
FOR USE IN INKJET PRINTERS ONLY.

2. Prep & Ironing



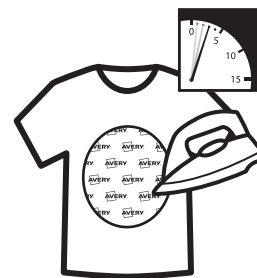
Trim Material

- Cut out design with a narrow margin around image.
- Keep edges rounded (if possible) to avoid lifting during ironing and washing.



Prep workspace

- Place a pillowcase down on a hard, heat-resistant surface, not an ironing board. A wooden table is best.
- Be sure iron does not have water in it and steam setting is off.
- Set iron to cotton setting and preheat for 5 minutes.
- Iron the pillowcase and garment to remove wrinkles.
- Use extreme caution when ironing. Avoid leaving iron face-down on ironing surface for extended period of time as it may result in injury or damage to the project or ironing surface.



Ironing

- Place transfer design down on the garment in the desired location.
- Iron transfer, applying firm pressure slowly from left to right and then from top to bottom.
- Be sure to iron over the edges.
- Turn off iron when finished.

Ironing Time:

Image Size	Ironing Time
Full sheet	3 minutes
1/2 sheet	1 ½ minutes
1/4 sheet	45 seconds

3. Finishing & Care



Finish transfer

- After ironing, remove your garment from the heating area and allow to cool for 2 minutes.
- Smoothly and slowly peel backing paper away from corner to corner.
- If image begins to lift, re-iron image focusing on lifting areas. Allow to cool once more before attempting to peel again.



Care and Maintenance

- Wait 24 hours before washing garment.
- Wash garment before wearing:
 - Turn garment inside out and machine wash cold separately from other clothes.
 - Use color-safe detergent and remove promptly from the washer.
 - Colors may bleed if left wet too long. Do not use bleach.
 - Tumble dry low with garment turned inside out.
 - Do not iron directly on transferred image after it has been applied to the garment.
 - The transferred image is not intended to withstand stretching other than normal wear and tear.