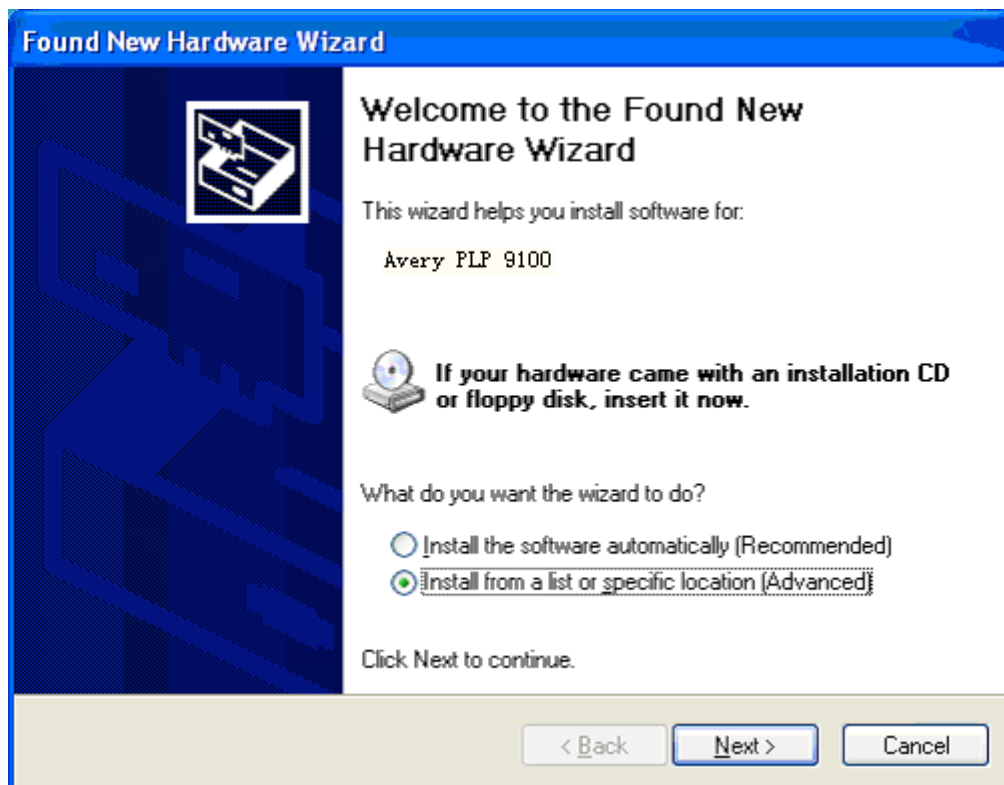
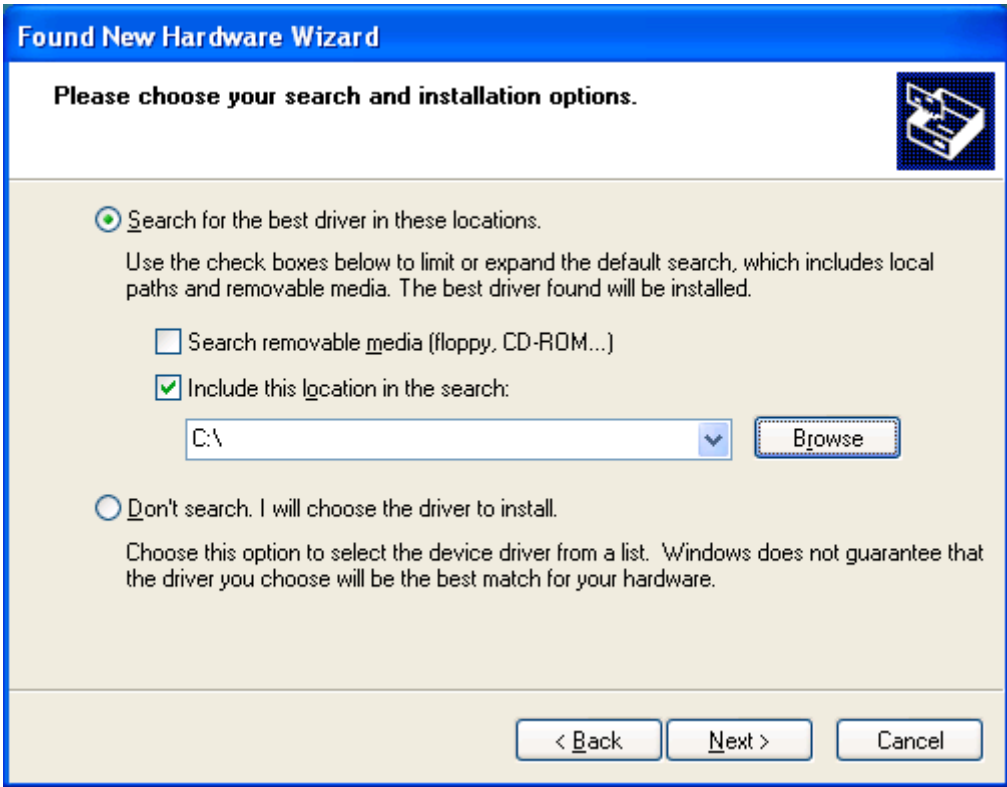


Avery Personal Label Printer Driver Installation Guide

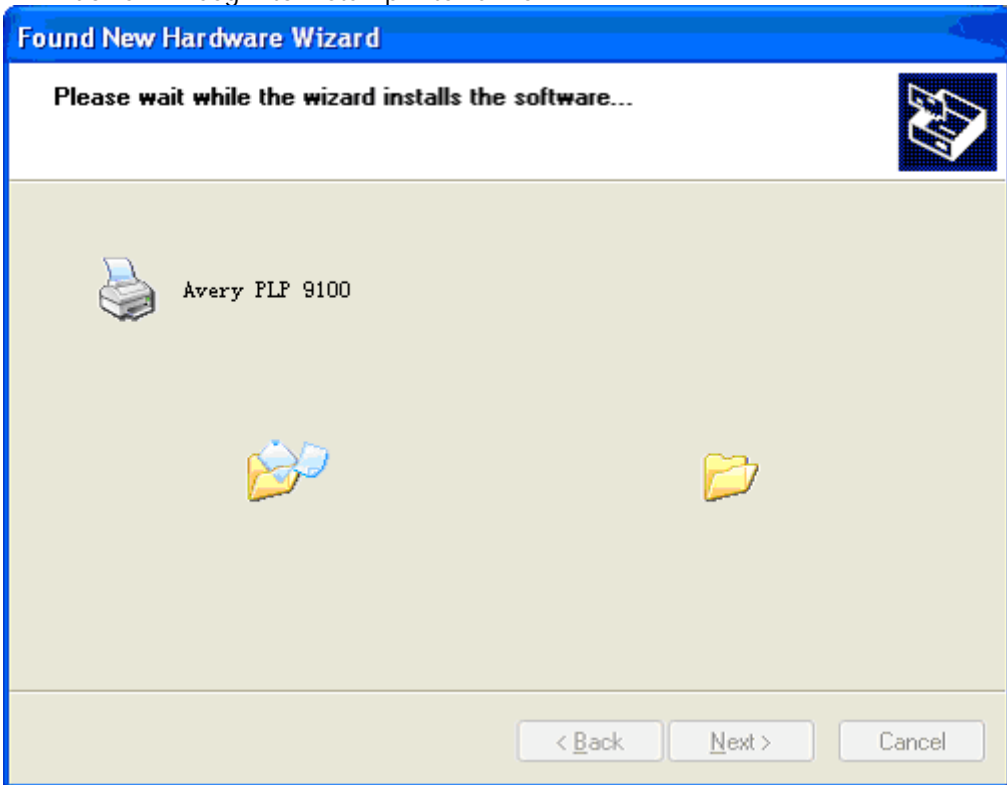
1. Download the drivers from <http://photoid.avery.com/support/software/2.0/index.html>. Click on the link "Windows 2000/XP" in the Printer Drivers section and download the self extracting PLP_Drivers_2KXP.exe file. Click on the file to store the driver files in a folder on the local machine. These files can be deleted once the driver is installed.
2. Plug in the printer into USB port of your computer and turn the printer on. Windows will detect the new hardware:



Select "Install from a list or specific location (Advanced)", Then click "Next":



3. Browse to driver folder where the drivers were stored and then click "OK":
4. Windows will begin to install printer driver:





Printer driver install finished.

